

Hopfenweg 21
Postfach/C.p. 5775
CH-3001 Bern
Tel. 031 370 21 11
Fax 031 370 21 09
info@travailsuisse.ch
www.travailsuisse.ch

Bern, 20. Juni 2011

Pressekonferenz zu den Managerlöhnen

Beilagen

1. Das Lohnkartell 2010
2. Rangliste 2010: Lohnschere zwischen Höchst- und Tiefstlohn
3. Lohnschere zwischen ø Konzernleitung und Tiefstlohn 2002–2010
4. Diagramm der Lohnscheren 2002 und 2010
5. Lohnschere zwischen ø Verwaltungsrat und Tiefstlohn 2002–2010
6. Übersicht Umsätze und Jahresergebnisse 2002–2010

1. Das Lohnkartell 2010

| Rang | Konzern | Name | Funktion 2010 | Höchstlohn (in Mio. CHF) | Tiefstlohn (in Mio. CHF) | Lohnschere |
|------|------------------|--------------------------|---------------------------------------------------------------------|-----------------------------|-----------------------------|------------|
| 1 | Credit Suisse | Antonio C. Quintella | CEO Credit Suisse Nord- und Südamerika | 15.630 | 0.050 ¹ | 1 : 313 |
| 2 | UBS | Morra Francesco | CEO UBS Schweiz | 13.048 ⁵ | 0.050 ¹ | 1 : 261 |
| 3 | Credit Suisse | Brady W. Dougan | CEO | 12.760 | 0.050 ¹ | 1 : 255 |
| 4 | Nestlé | Paul Bulcke | CEO und VR-Mitglied | 12.355 | 0.052 ² | 1 : 238 |
| 5 | Novartis | Joseph Jimenez | CEO | 12.919 | 0.059 ³ | 1 : 219 |
| 6 | Roche | Severin Schwan | CEO | 11.951 | 0.059 ² | 1 : 203 |
| 7 | Lindt & Sprüngli | Ernst Tanner | CEO und VR-Präsident | 9.110 | 0.046 ² | 1 : 200 |
| 8 | Credit Suisse | David R. Mathers | CFO | 9.712 ^{4,5} | 0.050 ¹ | 1 : 194 |
| 8 | Credit Suisse | Eric M. Varvel | CEO Investment Banking | 9.712 ⁴ | 0.050 ¹ | 1 : 194 |
| 8 | Credit Suisse | Fawzi Kyriakos-Saad | CEO Credit Suisse Europa, Naher Osten und Afrika | 9.712 ^{4,5} | 0.050 ¹ | 1 : 194 |
| 8 | Credit Suisse | Hans-Ulrich Meister | CEO Credit Suisse Schweiz | 9.712 ⁴ | 0.050 ¹ | 1 : 194 |
| 8 | Credit Suisse | Kai S. Nargolwala | Ehemaliger CEO Credit Suisse Asien-Pazifik | 9.712 ^{4,5} | 0.050 ¹ | 1 : 194 |
| 8 | Credit Suisse | Karl Landert | CIO | 9.712 ⁴ | 0.050 ¹ | 1 : 194 |
| 8 | Credit Suisse | Osama S. Abbasi | CEO Credit Suisse Asien-Pazifik | 9.712 ^{4,5} | 0.050 ¹ | 1 : 194 |
| 8 | Credit Suisse | Pamela A. Thomas-Graham | Chief Talent, Branding and Communications Officer | 9.712 ^{4,5} | 0.050 ¹ | 1 : 194 |
| 8 | Credit Suisse | Paul Calello | Chairman Investment Banking († 17.11.2010) | 9.712 ^{4,5} | 0.050 ¹ | 1 : 194 |
| 8 | Credit Suisse | Renato Fassbind | Ehemaliger CFO | 9.712 ^{4,5} | 0.050 ¹ | 1 : 194 |
| 8 | Credit Suisse | Robert S. Shafir | CEO Asset Management | 9.712 ⁴ | 0.050 ¹ | 1 : 194 |
| 8 | Credit Suisse | Romeo Cerutti | General Counsel | 9.712 ⁴ | 0.050 ¹ | 1 : 194 |
| 8 | Credit Suisse | Tobias Guldimann | CRO | 9.712 ⁴ | 0.050 ¹ | 1 : 194 |
| 8 | Credit Suisse | Walter Berchtold | CEO Credit Suisse Private Banking | 9.712 ⁴ | 0.050 ¹ | 1 : 194 |
| 22 | Novartis | Daniel Vasella | VR-Präsident | 11.000 | 0.059 ³ | 1 : 186 |
| 22 | UBS | Carsten Kengeter | Chairmann und CEO Investment Bank | 9.321 | 0.050 ¹ | 1 : 186 |
| 24 | ABB | Joe Hogan | CEO | 8.011 | 0.045 ² | 1 : 178 |
| 25 | Roche | Franz Humer | VR-Präsident | 10.083 | 0.059 ² | 1 : 171 |
| 26 | Nestlé | Peter Brabeck-Letmathe | VR-Präsident | 8.762 | 0.052 ² | 1 : 169 |
| 27 | Novartis | Mark C. Fishman | Präsident der Novartis Institutes for BioMedical Research (NIBR) | 8.692 | 0.052 ³ | 1 : 167 |
| 28 | UBS | Alexander Wilmot-Sitwell | Co-Chairman und Co-CEO UBS Group APAC | 7.319 ⁴ | 0.050 ¹ | 1 : 146 |
| 28 | UBS | Chi-Won Yoon | Co-Chairman und Co-CEO UBS Group APAC | 7.319 ⁴ | 0.050 ¹ | 1 : 146 |
| 28 | UBS | John A. Fraser | Chairmann und CEO Global Asset Management | 7.319 ⁴ | 0.050 ¹ | 1 : 146 |
| 28 | UBS | John Cryan | Group CFO | 7.319 ⁴ | 0.050 ¹ | 1 : 146 |
| 28 | UBS | Jürg Zeltner | CEO UBS Wealth Management und Co-CEO Wealth Management & Swiss Bank | 7.319 ⁴ | 0.050 ¹ | 1 : 146 |
| 28 | UBS | Lukas Gähwiler | CEO UBS Schweiz; Co-CEO Wealth Management & Swiss Bank | 7.319 ^{4,5} | 0.050 ¹ | 1 : 146 |
| 28 | UBS | Markus U. Diethelm | Group General Counsel | 7.319 ⁴ | 0.050 ¹ | 1 : 146 |
| 28 | UBS | Phillip J. Loftis | Group CRO | 7.319 ⁴ | 0.050 ¹ | 1 : 146 |
| 28 | UBS | Robert McCann | CEO Wealth Management Americas | 7.319 ⁴ | 0.050 ¹ | 1 : 146 |
| 28 | UBS | Robert Wolf | Chairman und CEO UBS Group Americas; Präsident Investment Bank | 7.319 ⁴ | 0.050 ¹ | 1 : 146 |
| 28 | UBS | Ulrich Körner | Group COO; CEO Corporate Center | 7.319 ⁴ | 0.050 ¹ | 1 : 146 |
| 39 | Zurich | Martin Senn | CEO | 7.291 | 0.053 ² | 1 : 138 |
| 40 | Schindler | Alfred N. Schindler | VR-Präsident | 7.418 | 0.055 ² | 1 : 136 |
| 41 | Roche | Pascal Soriot | COO Division Roche Pharma | 7.981 | 0.059 ² | 1 : 135 |
| 42 | Swatch | Nick Hayek | CEO und VR-Mitglied | 6.077 | 0.046 ⁶ | 1 : 134 |
| 43 | Credit Suisse | Hans-Ulrich Doerig | VR-Präsident | 6.274 | 0.050 ¹ | 1 : 125 |
| 44 | Roche | Erich Hunziker | CFO und stellvertretender CEO | 7.166 | 0.059 ² | 1 : 121 |
| 44 | Credit Suisse | Urs Rohner | VR-Vizepräsident | 6.035 | 0.050 ¹ | 1 : 121 |
| 46 | ABB | Michel Demaré | CFO | 4.600 | 0.045 ² | 1 : 102 |

Anmerkungen

- ¹ Tiefstlohn gemäss Vereinbarung über die Anstellungsbedingungen der Bankangestellten (VAB).
- ² Tiefstlohn durch Unternehmen angegeben.
- ³ Novartis macht keine Angabe zum Tiefstlohn. Daher Angabe von Roche verwendet.
- ⁴ Durchschnittsvergütung pro Konzernleitungsmitglied.
- ⁵ Eigene Berechnung für 12 Monate. Person hat weniger als 12 Monate in der Konzernleitung gearbeitet.
- ⁶ Mindestlohn gemäss dem GAV der Schweizerischen Uhren- und Mikroelektronikindustrie.

2. Rangliste 2010: Lohnschere zwischen Höchst- und Tiefstlohn

| Rang | Rangveränderung zum Vorjahr | Konzern | Name | Funktion 2010 | Entschädigung (in Mio. CHF) | | | Tiefstlohn 2010 (in Mio. CHF) | Verhältnis zu Tiefstlohn |
|------|-----------------------------|------------------|--------------------------------|-----------------------------------------|-----------------------------|------|--------|-------------------------------|--------------------------|
| | | | | | 2009 | Δ | 2010 | | |
| 1 | - | Credit Suisse | Antonio C. Quintella | CEO Credit Suisse Nord- und Südamerika | 90.590 ¹ | -83% | 15.630 | 0.050 ² | 1 : 313 |
| 2 | ↑ | Nestlé | Paul Bulcke | CEO und VR-Mitglied | 11.517 | 7% | 12.355 | 0.052 ³ | 1 : 238 |
| 3 | ↓ | Novartis | Joseph Jimenez | CEO | 7.801 ¹ | 66% | 12.919 | 0.059 ⁴ | 1 : 219 |
| 4 | - | Roche | Severin Schwan | CEO | 12.534 ¹ | -5% | 11.951 | 0.059 ³ | 1 : 203 |
| 5 | ↑ | Lindt & Sprüngli | Ernst Tanner | CEO und VR-Präsident | 7.511 | 21% | 9.110 | 0.046 ³ | 1 : 200 |
| 6 | ↓ | UBS | Carsten Kengeler | Chairmann und CEO Investment Bank | 13.190 ¹ | -29% | 9.321 | 0.050 ² | 1 : 186 |
| 7 | ↑ | ABB | Joe Hogan | CEO | 5.987 | 34% | 8.011 | 0.045 ³ | 1 : 178 |
| 8 | ↓ | Zurich | Martin Senn | CEO | 12.860 ¹ | -43% | 7.291 | 0.053 ³ | 1 : 138 |
| 9 | - | Schindler | Alfred Schindler | VR-Präsident | 7.418 | 0% | 7.418 | 0.054 ³ | 1 : 137 |
| 10 | ↑ | Swatch | Nick Hayek | CEO und VR-Mitglied | 5.150 | 18% | 6.077 | 0.046 ⁵ | 1 : 134 |
| 11 | ↓ | Clariant | Hariolf Kottmann | CEO | 8.441 | -36% | 5.407 | 0.059 ⁶ | 1 : 92 |
| 12 | ↓ | Oerlikon | Björn Bajan | General Counsel and Corporate Secretary | 6.446 ¹ | -32% | 4.354 | 0.053 ⁷ | 1 : 82 |
| 13 | - | Bäloise | Rolf Schäuble | VR-Präsident | 3.758 | 2% | 3.846 | 0.053 ³ | 1 : 72 |
| 14 | ↑ | Swiss Life | Bruno Pfister | CEO | 2.687 | 37% | 3.695 | 0.055 ³ | 1 : 68 |
| 15 | ↑ | Lonza | Stefan Borgas | CEO | 2.164 | 17% | 2.526 | 0.054 ⁶ | 1 : 47 |
| 16 | ↑ | Swisscom | Carsten Schloter | CEO | 1.819 | 4% | 1.899 | 0.046 ⁸ | 1 : 42 |
| 17 | ↑ | Implenia | Hanspeter Fässler ⁹ | CEO | 1.356 ¹ | 60% | 2.172 | 0.056 ¹⁰ | 1 : 39 |
| 18 | ↑ | Ascom | Riet Cadonau | CEO | 1.063 | 57% | 1.671 | 0.048 ³ | 1 : 35 |
| 19 | ↑ | Georg Fischer | Yves Serra | CEO | 1.176 | 51% | 1.775 | 0.052 ³ | 1 : 34 |
| 20 | ↓ | Kuoni | Peter Rothwell | CEO | 2.897 ¹ | -45% | 1.587 | 0.049 ³ | 1 : 32 |
| 21 | ↑ | Bobst | Jean-Pascal Bobst | CEP | 0.953 | 83% | 1.742 | 0.061 ³ | 1 : 28 |
| 22 | ↓ | Valora | Thomas Vollmoeller | CEO | 1.120 | 3% | 1.150 | 0.047 ¹¹ | 1 : 25 |
| 23 | ↓ | Helvetia | Stefan Loacker | CEO | 1.145 | 13% | 1.293 | 0.056 ³ | 1 : 23 |
| 24 | ↑ | Post | Jürg Bucher | CEO | 0.549 ¹ | 65% | 0.907 | 0.044 ¹² | 1 : 20 |
| 25 | ↑ | Ruag | Lukas Braunschweiler | CEO | 0.507 ¹ | 67% | 0.848 | 0.046 ³ | 1 : 19 |
| 26 | ↓ | Migros | ● Generaldirektion | - | 0.686 | 3% | 0.707 | 0.049 ¹³ | 1 : 14 |
| 27 | ↓ | Coop | ● Geschäftsleitung | - | 0.638 | -4% | 0.614 | 0.048 ¹⁴ | 1 : 13 |

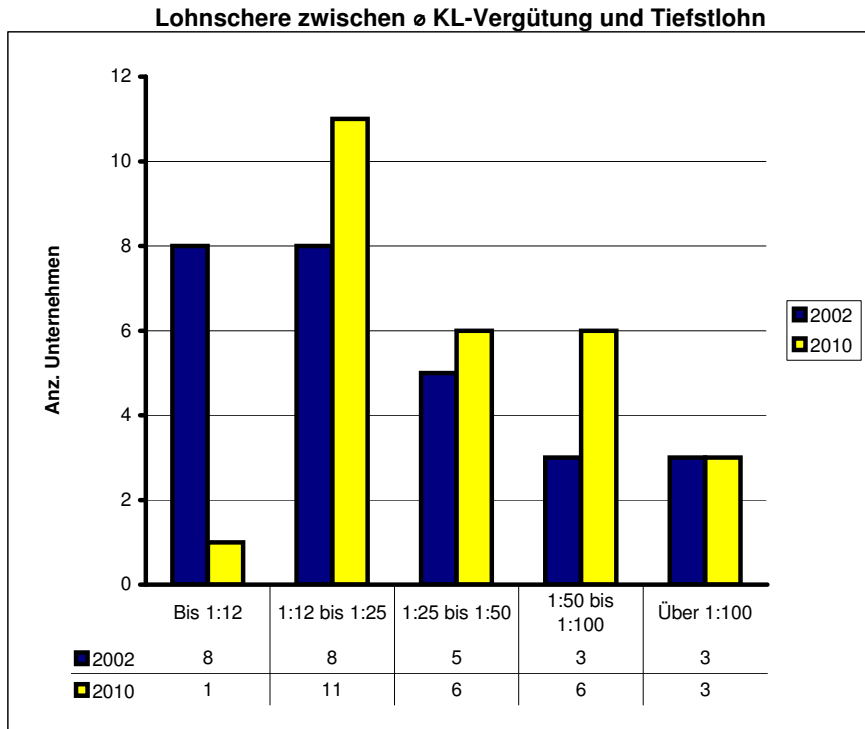
Anmerkungen

- ¹ Im Jahr 2009 erhielt eine andere Person diese höchste Vergütung.
- ² Tiefstlohn gemäss Vereinbarung über die Anstellungsbedingungen der Bankangestellten (VAB).
- ³ Tiefstlohn durch Unternehmen angegeben.
- ⁴ Novartis macht keine Angabe zum Tiefstlohn. Daher wurde die Angabe von Roche verwendet.
- ⁵ Mindestlohn gemäss dem GAV der Schweizerischen Uhren- und Mikrotechnikindustrie.
- ⁶ Unternehmen hat keine Angaben zum Tiefstlohn gemacht. Vorjahreswert der Nominalloohnerhöhung angepasst.
- ⁷ Tiefstlohn gemäss der Lohnstrukturerhebung (LSE) 2008. Der Nominalloohnerhöhung angepasst.
- ⁸ Mindestlohn gemäss GAV Swisscom.
- ⁹ Eigene Berechnung für 12 Monate. Person hat weniger als 12 Monate in der Konzernleitung gearbeitet.
- ¹⁰ Mindestlohn gemäss Landes-GAV Bauhauptgewerbe.
- ¹¹ Mindestlohn gemäss GAV Valora.
- ¹² Mindestlohn gemäss GAV Post.
- ¹³ Mindestlohn gemäss GAV Coop.
- ¹⁴ Mindestlohn gemäss Landes-GAV Migros.

3. Lohnschere zwischen ø KL-Vergütung und Tiefstlohn

| ø KL-Mitglied | | 2002 | Δ 2002-2003 | 2003 | Δ 2003-2004 | 2004 | Δ 2004-2005 | 2005 | Δ 2005-2006 | 2006 | Δ 2006-2007 | 2007 | Δ 2007-2008 | 2008 | Δ 2008-2009 | 2009 | Δ 2009-2010 | 2010 | Δ 2002-2010 |
|------------------|------|------|-------------|------|-------------|------|-------------|------|-------------|------|-------------|------|-------------|------|-------------|------|-------------|------|-------------|
| Georg Fischer | ø KL | 9 | 18% | 11 | 46% | 16 | 3% | 16 | 21% | 19 | 1% | 20 | -9% | 18 | -22% | 14 | 45% | 20 | 123% |
| Swatch | ø KL | 22 | 27% | 28 | 2% | 28 | 1% | 28 | 10% | 31 | 28% | 40 | -14% | 34 | -9% | 31 | 35% | 42 | 95% |
| Ascom | ø KL | 16 | 81% | 29 | -23% | 22 | 0% | 22 | -16% | 18 | 52% | 28 | -27% | 20 | -27% | 15 | 29% | 19 | 22% |
| SwissLife | ø KL | 23 | 36% | 31 | -1% | 30 | 99% | 60 | 10% | 67 | -21% | 53 | 2% | 54 | -43% | 31 | 24% | 38 | 68% |
| Nestlé | ø KL | 58 | 30% | 75 | 1% | 75 | -4% | 72 | 22% | 88 | -7% | 82 | 2% | 83 | -18% | 69 | 23% | 85 | 46% |
| Bobst | ø KL | 15 | -13% | 13 | -6% | 12 | 18% | 15 | -19% | 12 | 58% | 19 | -24% | 14 | -5% | 13 | 19% | 16 | 5% |
| Ruag | ø KL | 8 | 12% | 9 | 13% | 10 | -4% | 10 | 13% | 11 | 5% | 12 | 5% | 12 | -13% | 11 | 17% | 12 | 39% |
| Lindt & Sprüngli | ø KL | 42 | 32% | 55 | 18% | 65 | 22% | 80 | 24% | 98 | 2% | 100 | -17% | 83 | -12% | 73 | 16% | 85 | 105% |
| Post | ø KL | 10 | 2% | 10 | 1% | 10 | 11% | 11 | 10% | 12 | 4% | 13 | -4% | 12 | -4% | 12 | 13% | 13 | 36% |
| Lonza | ø KL | 9 | -11% | 8 | 67% | 14 | 60% | 22 | 34% | 30 | 12% | 34 | -11% | 30 | -21% | 23 | 12% | 26 | 178% |
| Swisscom | ø KL | 18 | 9% | 20 | -6% | 19 | -4% | 18 | -1% | 18 | 10% | 20 | 14% | 22 | 2% | 23 | 9% | 25 | 36% |
| Clariant | ø KL | 28 | -27% | 20 | -30% | 14 | 37% | 19 | 5% | 20 | -15% | 17 | 54% | 26 | 105% | 54 | 8% | 58 | 110% |
| Helvetia | ø KL | 10 | 31% | 14 | 18% | 16 | 2% | 16 | 8% | 18 | 69% | 30 | -49% | 16 | 13% | 18 | 4% | 18 | 78% |
| Migros | ø KL | 13 | 5% | 13 | 6% | 14 | 3% | 14 | 3% | 15 | 3% | 15 | -8% | 14 | -1% | 14 | 3% | 14 | 14% |
| ABB | ø KL | 43 | 16% | 50 | 2% | 51 | 16% | 60 | 20% | 72 | 29% | 93 | 70% | 158 | -53% | 74 | 2% | 75 | 73% |
| Valora | ø KL | 10 | 5% | 11 | 72% | 19 | 4% | 20 | 44% | 28 | -15% | 24 | -15% | 21 | -27% | 15 | 0.1% | 15 | 45% |
| Roche | ø KL | 61 | 24% | 76 | 32% | 100 | 25% | 125 | 12% | 140 | 20% | 168 | -39% | 103 | 12% | 115 | -1% | 114 | 87% |
| Oerlikon | ø KL | 35 | -16% | 29 | -44% | 16 | 149% | 41 | 110% | 86 | -2% | 84 | -65% | 29 | 73% | 51 | -4% | 49 | 42% |
| Coop | ø KL | 11 | 6% | 11 | 3% | 12 | 4% | 12 | 9% | 13 | 5% | 14 | -9% | 13 | 5% | 13 | -4% | 13 | 20% |
| Schindler | ø KL | 30 | -3% | 29 | 6% | 31 | 12% | 35 | 5% | 37 | 10% | 40 | 21% | 49 | 5% | 51 | -4% | 49 | 63% |
| Zurich | ø KL | 84 | -18% | 69 | 47% | 101 | 13% | 114 | 9% | 124 | 10% | 137 | -28% | 98 | -2% | 97 | -12% | 85 | 2% |
| Implenia | ø KL | 7 | 6% | 8 | 15% | 9 | 14% | 10 | 38% | 14 | 55% | 22 | 3% | 22 | 22% | 28 | -24% | 21 | 185% |
| UBS | ø KL | 254 | 23% | 312 | 23% | 382 | 11% | 424 | -7% | 396 | -64% | 144 | -65% | 51 | 274% | 190 | -28% | 137 | -46% |
| Kuoni | ø KL | 13 | 57% | 20 | 37% | 27 | -25% | 21 | -26% | 15 | 43% | 22 | 34% | 29 | 15% | 34 | -33% | 23 | 78% |
| Bâloise | ø KL | 14 | 22% | 17 | 31% | 23 | -3% | 22 | 21% | 27 | 68% | 45 | 14% | 51 | 12% | 57 | -37% | 36 | 153% |
| Novartis | ø KL | 111 | -4% | 106 | 83% | 195 | -3% | 189 | 1% | 191 | -12% | 168 | 7% | 180 | 3% | 185 | -47% | 99 | -11% |
| Credit Suisse | ø KL | 235 | 54% | 361 | 8% | 389 | -1% | 386 | 3% | 398 | -28% | 285 | -32% | 195 | 141% | 469 | -56% | 207 | -12% |

4. Diagramm der Lohnscheren 2002 und 2010



| | 2002 | 2010 |
|------------|-------------------------|-------------------------|
| Bis 1:12 | Implenia 1 : 7 | Ruag 1 : 12 |
| | Ruag 1 : 8 | |
| | Georg Fischer 1 : 9 | |
| | Lonza 1 : 9 | |
| | Post 1 : 10 | |
| | Helvetia 1 : 10 | |
| | Valora 1 : 10 | |
| | Coop 1 : 11 | |
| Bis 1:25 | Migros 1 : 13 | Post 1 : 13 |
| | Kuoni 1 : 13 | Coop 1 : 13 |
| | Bâloise 1 : 14 | Migros 1 : 14 |
| | Bobst 1 : 15 | Valora 1 : 15 |
| | Ascom 1 : 16 | Bobst 1 : 16 |
| | Swisscom 1 : 18 | Helvetia 1 : 18 |
| | Swatch 1 : 22 | Ascom 1 : 19 |
| | SwissLife 1 : 23 | Georg Fischer 1 : 20 |
| | | Implenia 1 : 21 |
| | | Kuoni 1 : 23 |
| | Swisscom 1 : 25 | |
| Bis 1:50 | Clariant 1 : 28 | Lonza 1 : 26 |
| | Schindler 1 : 30 | Bâloise 1 : 36 |
| | Oerlikon 1 : 35 | SwissLife 1 : 38 |
| | Lindt & Sprüngli 1 : 42 | Swatch 1 : 42 |
| | ABB 1 : 43 | Oerlikon 1 : 49 |
| | | Schindler 1 : 49 |
| Bis 1:100 | Nestlé 1 : 58 | Clariant 1 : 58 |
| | Roche 1 : 61 | ABB 1 : 75 |
| | Zurich 1 : 84 | Nestlé 1 : 85 |
| | | Lindt & Sprüngli 1 : 85 |
| | | Zurich 1 : 85 |
| | Novartis 1 : 99 | |
| Über 1:100 | Novartis 1 : 111 | Roche 1 : 114 |
| | Credit Suisse 1 : 235 | UBS 1 : 137 |
| | UBS 1 : 254 | Credit Suisse 1 : 207 |

5. Lohnschere zwischen øVerwaltungsrat und Tiefstlohn 2002–2010

| ø VR-Mitglied | | 2002 | Δ 2002-2003 | 2003 | Δ 2003-2004 | 2004 | Δ 2004-2005 | 2005 | Δ 2005-2006 | 2006 | Δ 2006-2007 | 2007 | Δ 2007-2008 | 2008 | Δ 2008-2009 | 2009 | Δ 2009-2010 | 2010 | Δ 2002-2010 |
|------------------|------|------|-------------|------|-------------|------|-------------|------|-------------|------|-------------|------|-------------|------|-------------|------|-------------|------|-------------|
| Novartis | ø VR | 8.1 | 19% | 9.7 | -4% | 9.3 | 6% | 9.9 | 2% | 10.0 | -1% | 10.0 | -2% | 9.8 | 2% | 10.0 | 165% | 26.5 | 226% |
| Georg Fischer | ø VR | 1.0 | 111% | 2.1 | 56% | 3.2 | -24% | 2.5 | 35% | 3.3 | -6% | 3.1 | -23% | 2.4 | -14% | 2.1 | 89% | 3.9 | 295% |
| Swatch | ø VR | 2.6 | 0% | 2.6 | 33% | 3.4 | -9% | 3.1 | -15% | 2.7 | -7% | 2.5 | -6% | 2.3 | 0% | 2.3 | 21% | 2.8 | 10% |
| Lindt & Sprüngli | ø VR | 2.7 | 0% | 2.7 | 0% | 2.7 | 0% | 2.7 | 0% | 2.7 | 22% | 3.3 | 12% | 3.7 | 61% | 6.0 | 19% | 7.1 | 163% |
| UBS | ø VR | 13.2 | 31% | 17.3 | 6% | 18.4 | -1% | 18.1 | -21% | 14.4 | 2% | 14.7 | 10% | 16.1 | -20% | 13.0 | 15% | 14.9 | 13% |
| Bobst | ø VR | 3.4 | -7% | 3.2 | 2% | 3.2 | 65% | 5.3 | -38% | 3.3 | 4% | 3.4 | -7% | 3.2 | -18% | 2.6 | 15% | 3.0 | -12% |
| Lonza | ø VR | 10.5 | -33% | 7.0 | 16% | 8.1 | 11% | 9.0 | -10% | 8.1 | -4% | 7.8 | -5% | 7.4 | -8% | 6.8 | 13% | 7.7 | -26% |
| Ruag | ø VR | 1.7 | 0% | 1.7 | 0% | 1.7 | 5% | 1.8 | 0% | 1.8 | 0% | 1.8 | 29% | 2.3 | -23% | 1.8 | 9% | 1.9 | 13% |
| Kuoni | ø VR | 4.5 | 17% | 5.3 | 12% | 5.9 | -3% | 5.7 | 16% | 6.6 | -25% | 5.0 | -11% | 4.4 | 2% | 4.5 | 5% | 4.7 | 5% |
| Swisscom | ø VR | 4.8 | 12% | 5.3 | 0% | 5.3 | -9% | 4.9 | 5% | 5.1 | 2% | 5.2 | -2% | 5.1 | 0% | 5.1 | 2% | 5.2 | 9% |
| SwissLife | ø VR | 3.1 | -11% | 2.7 | 33% | 3.6 | -2% | 3.6 | 18% | 4.2 | 40% | 5.9 | -26% | 4.3 | 27% | 5.5 | 1% | 5.6 | 81% |
| Coop | ø VR | 1.4 | 14% | 1.6 | 6% | 1.7 | 64% | 2.8 | 10% | 3.0 | -3% | 2.9 | -3% | 2.8 | 5% | 3.0 | 0% | 3.0 | 115% |
| ABB | ø VR | 7.9 | 12% | 8.8 | 0% | 8.8 | 8% | 9.5 | 2% | 9.7 | 0% | 9.7 | 0% | 9.7 | 0% | 9.7 | 0% | 9.7 | 23% |
| Ascom | ø VR | 3.5 | -33% | 2.3 | -2% | 2.3 | 16% | 2.6 | -1% | 2.6 | 11% | 2.9 | 9% | 3.1 | -7% | 2.9 | 0% | 2.9 | -16% |
| Migros | ø VR | 2.0 | -6% | 1.9 | 8% | 2.0 | -7% | 1.9 | 23% | 2.3 | 0% | 2.3 | -11% | 2.0 | 5% | 2.1 | 0% | 2.1 | 8% |
| Schindler | ø VR | 2.2 | 39% | 3.1 | 0% | 3.1 | 0% | 3.1 | 9% | 3.3 | 7% | 3.6 | 11% | 4.0 | 1% | 4.0 | 0% | 4.0 | 82% |
| Clariant | ø VR | 1.9 | 34% | 2.6 | -1% | 2.5 | 21% | 3.1 | 22% | 3.7 | -14% | 3.2 | 88% | 6.0 | -23% | 4.6 | -1% | 4.6 | 139% |
| Helvetia | ø VR | 2.4 | 5% | 2.5 | 10% | 2.8 | 4% | 2.9 | 52% | 4.4 | -11% | 4.0 | 5% | 4.1 | -3% | 4.0 | -2% | 4.0 | 65% |
| Bâloise | ø VR | 5.6 | 3% | 5.7 | 30% | 7.4 | -1% | 7.4 | 13% | 8.4 | 32% | 11.0 | -64% | 4.0 | 4% | 4.2 | -2% | 4.1 | -27% |
| Implenia | ø VR | 1.4 | 16% | 1.7 | -9% | 1.5 | 34% | 2.0 | 23% | 2.5 | 32% | 3.3 | -16% | 2.8 | 8% | 3.0 | -2% | 2.9 | 103% |
| Zurich | ø VR | 8.0 | -6% | 7.6 | 1% | 7.7 | 6% | 8.1 | -7% | 7.6 | -5% | 7.2 | -6% | 6.7 | -4% | 6.4 | -4% | 6.2 | -23% |
| Nestlé | ø VR | 11.3 | 11% | 12.6 | -5% | 12.0 | -18% | 9.8 | -12% | 8.6 | 1% | 8.8 | -5% | 8.3 | 156% | 21.4 | -5% | 20.3 | 80% |
| Valora | ø VR | 4.0 | -57% | 1.7 | 73% | 2.9 | 46% | 4.3 | 32% | 5.6 | -46% | 3.1 | 38% | 4.2 | 31% | 5.5 | -7% | 5.1 | 29% |
| Oerlikon | ø VR | 1.1 | 206% | 3.4 | -6% | 3.2 | -34% | 2.1 | 367% | 9.8 | 3% | 10.1 | -35% | 6.6 | -8% | 6.1 | -11% | 5.4 | 383% |
| Credit Suisse | ø VR | 3.7 | 755% | 31.6 | 24% | 39.3 | -2% | 38.4 | 16% | 44.7 | -9% | 40.7 | -57% | 17.5 | 76% | 30.9 | -14% | 26.6 | 621% |
| Post | ø VR | 2.0 | 16% | 2.3 | 5% | 2.4 | 5% | 2.5 | 5% | 2.7 | -7% | 2.5 | 0% | 2.5 | 10% | 2.7 | -17% | 2.3 | 16% |
| Roche | ø VR | 5.7 | 0% | 5.7 | 2% | 5.8 | 5% | 6.1 | 1% | 6.1 | 6% | 6.5 | 284% | 25.1 | 7% | 26.8 | -23% | 20.6 | 259% |

6. Übersicht Umsätze und Jahresergebnisse 2002–2010

| Umsatz und Jahresergebnis (in Mio. CHF) | | 2002 | Δ 2002-2003 | 2003 | Δ 2003-2004 | 2004 | Δ 2004-2005 | 2005 | Δ 2005-2006 | 2006 | Δ 2006-2007 | 2007 | Δ 2007-2008 | 2008 | Δ 2008-2009 | 2009 | Δ 2009-2010 | 2010 | Δ 2002-2010 |
|-----------------------------------------|------------|---------|-------------|---------|-------------|---------|-------------|---------|-------------|---------|-------------|---------|-------------|---------|-------------|---------|-------------|---------|-------------|
| Total | Umsätze | 450'700 | 4% | 467'315 | 1% | 473'480 | 8% | 513'174 | 1% | 518'028 | 2% | 527'474 | -10% | 476'620 | 9% | 517'601 | 1% | 525'345 | 17% |
| | Ergebnisse | 10'419 | 176% | 28'733 | 42% | 40'849 | 35% | 55'010 | 21% | 66'626 | -20% | 53'305 | -59% | 21'604 | 109% | 45'100 | 79% | 80'672 | 674% |
| Banken | Umsätze | 81'366 | 5% | 85'143 | 6% | 89'985 | 13% | 101'323 | -15% | 86'339 | -13% | 74'784 | -31% | 51'767 | 14% | 58'779 | 7% | 62'619 | -23% |
| | Ergebnisse | -913 | 868% | 7'009 | 95% | 13'644 | 46% | 19'879 | 19% | 23'584 | -89% | 2'513 | -1274% | -29'510 | 114% | 3'988 | 217% | 12'632 | 1484% |
| Chemie und Pharma | Umsätze | 73'731 | 2% | 75'428 | 0% | 75'314 | 15% | 86'343 | 11% | 96'149 | 7% | 103'219 | -2% | 101'525 | 5% | 106'394 | 3% | 110'003 | 49% |
| | Ergebnisse | 10'896 | -7% | 10'141 | 19% | 12'033 | 24% | 14'867 | 20% | 17'867 | 10% | 19'590 | 2% | 20'067 | -12% | 17'649 | 12% | 19'750 | 81% |
| Maschinen | Umsätze | 46'629 | -8% | 42'997 | -4% | 41'112 | 6% | 43'734 | 11% | 48'610 | 25% | 60'987 | 3% | 63'076 | -20% | 50'161 | 0% | 49'988 | 7% |
| | Ergebnisse | -1'535 | 33% | -1'030 | 109% | 95 | 1690% | 1'700 | 72% | 2'928 | 86% | 5'432 | -31% | 3'722 | -24% | 2'835 | 26% | 3'573 | 333% |
| Versicherungen | Umsätze | 92'014 | 17% | 107'555 | 5% | 113'318 | 7% | 120'892 | -5% | 115'436 | -12% | 101'569 | -37% | 63'961 | 73% | 110'552 | -3% | 107'176 | 16% |
| | Ergebnisse | -7'920 | 139% | 3'126 | 32% | 4'114 | 36% | 5'583 | 41% | 7'874 | 20% | 9'441 | -55% | 4'253 | 25% | 5'319 | -8% | 4'915 | 162% |
| Detailhandel | Umsätze | 37'262 | 3% | 38'363 | -1% | 38'028 | 0% | 38'116 | 4% | 39'714 | 6% | 42'188 | 14% | 47'950 | -1% | 47'573 | 1% | 47'925 | 29% |
| | Ergebnisse | 605 | 0% | 607 | 68% | 1'019 | -4% | 974 | 24% | 1'204 | -1% | 1'197 | -7% | 1'116 | 19% | 1'329 | 4% | 1'383 | 129% |
| Ehemalige Staatsbetriebe | Umsätze | 18'295 | -1% | 18'135 | 3% | 18'609 | -1% | 18'425 | 2% | 18'794 | 13% | 21'210 | 7% | 22'715 | -1% | 22'406 | 1% | 22'520 | 23% |
| | Ergebnisse | 1'079 | 82% | 1'961 | 25% | 2'460 | 28% | 3'138 | -10% | 2'810 | 9% | 3'056 | -14% | 2'627 | -3% | 2'546 | 9% | 2'788 | 158% |
| Nahrungsmittel | Umsätze | 90'841 | -1% | 89'780 | -3% | 86'685 | 8% | 93'362 | 8% | 101'044 | 9% | 110'498 | 2% | 112'481 | -2% | 110'143 | 2% | 112'301 | 24% |
| | Ergebnisse | 7'666 | -17% | 6'335 | 8% | 6'866 | 20% | 8'254 | 14% | 9'406 | 16% | 10'900 | 68% | 18'301 | -42% | 10'621 | 225% | 34'475 | 350% |
| Restliche Unternehmen | Umsätze | 10'562 | -6% | 9'916 | 5% | 10'430 | 5% | 10'980 | 9% | 11'943 | 9% | 13'020 | 1% | 13'145 | -12% | 11'595 | 11% | 12'812 | 21% |
| | Ergebnisse | 541 | 8% | 584 | 6% | 618 | 0% | 615 | 55% | 953 | 23% | 1'176 | -13% | 1'029 | -21% | 812 | 42% | 1'156 | 114% |

6. Übersicht Umsätze und Jahresergebnisse 2002–2010

| Umsatz und Jahresergebnis (in Mio. CHF) | | 2002 | Δ 2002-2003 | 2003 | Δ 2003-2004 | 2004 | Δ 2004-2005 | 2005 | Δ 2005-2006 | 2006 | Δ 2006-2007 | 2007 | Δ 2007-2008 | 2008 | Δ 2008-2009 | 2009 | Δ 2009-2010 | 2010 | Δ 2002-2010 |
|-----------------------------------------|----------|--------|-------------|--------|-------------|--------|-------------|--------|-------------|--------|-------------|--------|-------------|--------|-------------|--------|-------------|--------|-------------|
| ABB | Umsatz | 30'291 | -9% | 27'480 | -9% | 25'023 | 10% | 27'423 | 6% | 29'171 | 20% | 35'017 | 8% | 37'810 | -9% | 34'504 | -5% | 32'902 | 9% |
| | Ergebnis | -1'274 | 18% | -1'048 | 96% | -43 | 2207% | 916 | 90% | 1'742 | 159% | 4'508 | -25% | 3'377 | -7% | 3'148 | -15% | 2'667 | 309% |
| Ascom | Umsatz | 2'066 | -27% | 1'515 | -45% | 838 | -34% | 553 | -14% | 475 | 3% | 491 | 4% | 509 | 5% | 537 | 6% | 571 | -72% |
| | Ergebnis | -281 | 73% | -76 | 159% | 45 | 211% | 140 | -88% | 17 | -381% | -48 | 117% | 8 | 198% | 24 | 33% | 33 | 112% |
| Bäloise | Umsatz | 8'697 | 9% | 9'505 | -2% | 9'305 | 0% | 9'303 | 3% | 9'538 | 5% | 10'001 | -21% | 7'858 | 24% | 9'765 | -2% | 9'541 | 10% |
| | Ergebnis | -635 | 115% | 98 | 127% | 223 | 81% | 404 | 75% | 707 | 16% | 820 | -53% | 387 | 9% | 421 | 4% | 437 | 169% |
| Bobst | Umsatz | 1'478 | -5% | 1'409 | 14% | 1'602 | -1% | 1'591 | 1% | 1'604 | 9% | 1'744 | -6% | 1'633 | -35% | 1'056 | 21% | 1'280 | -13% |
| | Ergebnis | 71 | -42% | 42 | 26% | 52 | -11% | 47 | 121% | 103 | 26% | 130 | -57% | 56 | -387% | -161 | 131% | 49 | -31% |
| Lindt & Sprüngli | Umsatz | 1'681 | 7% | 1'801 | 11% | 1'995 | 13% | 2'247 | 15% | 2'586 | 14% | 2'946 | -13% | 2'573 | -2% | 2'525 | 2% | 2'579 | 53% |
| | Ergebnis | 102 | 20% | 122 | 22% | 149 | 16% | 173 | 21% | 209 | 20% | 251 | 4% | 262 | -26% | 193 | 25% | 242 | 137% |
| Clariant | Umsatz | 9'330 | -9% | 8'516 | 0% | 8'530 | -4% | 8'181 | -1% | 8'100 | 5% | 8'533 | -5% | 8'071 | -18% | 6'614 | 8% | 7'120 | -24% |
| | Ergebnis | -648 | 125% | 161 | -7% | 150 | 28% | 192 | -141% | -78 | 106% | 5 | -840% | -37 | -424% | -194 | 198% | 191 | 129% |
| Coop | Umsatz | 14'361 | 6% | 15'222 | -2% | 14'866 | 0% | 14'885 | 5% | 15'590 | 7% | 16'669 | 16% | 19'269 | 2% | 19'729 | 1% | 20'007 | 39% |
| | Ergebnis | 331 | 3% | 341 | -6% | 320 | -16% | 270 | 15% | 310 | 13% | 350 | 11% | 390 | 10% | 430 | 9% | 470 | 42% |
| Credit Suisse AG | Umsatz | 47'245 | 9% | 51'353 | 5% | 54'014 | 12% | 60'632 | -36% | 38'603 | 2% | 39'321 | -41% | 23'212 | 45% | 33'617 | -9% | 30'625 | -35% |
| | Ergebnis | -4'448 | 117% | 770 | 631% | 5'628 | 4% | 5'850 | 94% | 11'327 | -31% | 7'760 | -206% | -8'218 | 182% | 6'724 | -24% | 5'098 | 215% |
| Georg Fischer | Umsatz | 3'417 | -5% | 3'257 | 9% | 3'540 | 4% | 3'692 | 10% | 4'048 | 11% | 4'497 | -1% | 4'465 | -35% | 2'906 | 19% | 3'447 | 1% |
| | Ergebnis | -20 | -635% | -147 | 171% | 105 | 67% | 175 | 42% | 249 | -2% | 245 | -72% | 69 | -445% | -238 | 145% | 108 | 640% |
| Helvetia Holding | Umsatz | | | | | 5'649 | 12% | 6'346 | -2% | 6'231 | 1% | 6'310 | -9% | 5'712 | 17% | 6'711 | 1% | 6'755 | 20% |
| | Ergebnis | -362 | 126% | 92 | 141% | 223 | 36% | 302 | 40% | 424 | -5% | 402 | -43% | 231 | 39% | 321 | 7% | 342 | 194% |
| Implenia | Umsatz | 2'760 | -4% | 2'655 | 2% | 2'697 | 4% | 2'795 | 1% | 2'810 | -15% | 2'381 | -2% | 2'324 | -2% | 2'280 | 5% | 2'388 | -13% |
| | Ergebnis | 19 | 42% | 26 | 20% | 32 | 15% | 36 | -83% | 6 | 316% | 26 | 57% | 40 | 18% | 47 | 11% | 52 | 182% |

6. Übersicht Umsätze und Jahresergebnisse 2002–2010

| Umsatz und Jahresergebnis (in Mio. CHF) | | 2002 | Δ 2002-2003 | 2003 | Δ 2003-2004 | 2004 | Δ 2004-2005 | 2005 | Δ 2005-2006 | 2006 | Δ 2006-2007 | 2007 | Δ 2007-2008 | 2008 | Δ 2008-2009 | 2009 | Δ 2009-2010 | 2010 | Δ 2002-2010 |
|-----------------------------------------|----------|--------|-------------|--------|-------------|--------|-------------|--------|-------------|--------|-------------|---------|-------------|---------|-------------|---------|-------------|---------|-------------|
| Kuoni | Umsatz | 3'739 | -12% | 3'295 | 9% | 3'581 | 3% | 3'688 | 11% | 4'082 | 15% | 4'699 | 3% | 4'855 | -20% | 3'894 | 2% | 3'984 | 7% |
| | Ergebnis | 29 | 130% | 66 | 12% | 74 | -157% | -42 | 378% | 117 | 16% | 136 | 11% | 151 | -99% | 2 | 1350% | 23 | -19% |
| Lonza | Umsatz | 2'536 | -12% | 2'242 | -3% | 2'182 | 16% | 2'521 | 16% | 2'914 | -2% | 2'870 | 2% | 2'937 | -8% | 2'690 | 0% | 2'680 | 6% |
| | Ergebnis | 205 | 52% | 312 | -36% | 201 | -21% | 159 | 40% | 222 | 36% | 301 | 39% | 419 | -62% | 159 | 79% | 284 | 39% |
| Migros | Umsatz | 19'824 | 1% | 20'013 | 1% | 20'303 | 0% | 20'385 | 5% | 21'375 | 6% | 22'697 | 13% | 25'750 | -3% | 24'947 | 0% | 25'040 | 26% |
| | Ergebnis | 178 | 109% | 372 | 47% | 545 | 28% | 699 | 20% | 839 | -5% | 801 | -12% | 701 | 21% | 846 | 1% | 852 | 378% |
| Nestlé | Umsatz | 89'160 | -1% | 87'979 | -4% | 84'690 | 8% | 91'115 | 8% | 98'458 | 9% | 107'552 | 2% | 109'908 | -2% | 107'618 | 2% | 109'722 | 23% |
| | Ergebnis | 7'564 | -18% | 6'213 | 8% | 6'717 | 20% | 8'081 | 14% | 9'197 | 16% | 10'649 | 69% | 18'039 | -42% | 10'428 | 228% | 34'233 | 353% |
| Novartis | Umsatz | 32'412 | 3% | 33'450 | 5% | 35'080 | 14% | 40'130 | 7% | 43'094 | 6% | 45'683 | -2% | 44'900 | 7% | 48'039 | 10% | 52'730 | 63% |
| | Ergebnis | 7'313 | -10% | 6'599 | 5% | 6'956 | 10% | 7'650 | 12% | 8'552 | -8% | 7'847 | 13% | 8'841 | 4% | 9'174 | 13% | 10'384 | 42% |
| Oerlikon | Umsatz | 1'490 | 8% | 1'610 | 15% | 1'850 | -13% | 1'605 | 37% | 2'206 | 145% | 5'404 | -14% | 4'632 | -38% | 2'877 | 25% | 3'601 | 142% |
| | Ergebnis | -39 | 141% | 16 | -2425% | -372 | 106% | 21 | 1357% | 306 | 4% | 319 | -232% | -422 | -40% | -592 | 101% | 5 | 113% |
| Post | Umsatz | 6'874 | 0% | 6'888 | 7% | 7'350 | 2% | 7'499 | 5% | 7'895 | 10% | 8'712 | 3% | 8'980 | -3% | 8'709 | 0% | 8'736 | 27% |
| | Ergebnis | 211 | 73% | 366 | 129% | 837 | -3% | 811 | 3% | 837 | 9% | 909 | -9% | 825 | -12% | 728 | 25% | 910 | 331% |
| Roche | Umsatz | 29'453 | 6% | 31'220 | -5% | 29'522 | 20% | 35'511 | 18% | 42'041 | 10% | 46'133 | -1% | 45'617 | 8% | 49'051 | -3% | 47'473 | 61% |
| | Ergebnis | 4'026 | -24% | 3'069 | 54% | 4'726 | 45% | 6'866 | 34% | 9'171 | 25% | 11'437 | -5% | 10'844 | -22% | 8'510 | 4% | 8'891 | 121% |
| RUAG | Umsatz | 1'006 | 21% | 1'221 | -2% | 1'202 | -1% | 1'194 | 5% | 1'247 | 13% | 1'409 | 9% | 1'537 | 10% | 1'696 | 6% | 1'796 | 79% |
| | Ergebnis | 44 | -41% | 26 | 12% | 29 | -164% | -19 | 471% | 69 | 9% | 76 | -33% | 51 | -311% | -107 | 186% | 92 | 109% |
| Schindler | Umsatz | 7'888 | -2% | 7'725 | 7% | 8'259 | 7% | 8'870 | 25% | 11'106 | 25% | 13'835 | 1% | 14'027 | -10% | 8'281 | -1% | 8'187 | 4% |
| | Ergebnis | 8 | 2200% | 184 | 67% | 308 | 30% | 401 | 27% | 511 | -46% | 278 | 128% | 634 | 3% | 653 | 9% | 711 | 8788% |
| Swatch | Umsatz | 4'063 | -2% | 3'966 | 5% | 4'152 | 8% | 4'497 | 12% | 5'050 | 18% | 5'941 | 0% | 5'966 | -9% | 5'421 | 19% | 6'440 | 59% |
| | Ergebnis | 494 | 0% | 492 | 4% | 512 | 21% | 621 | 34% | 830 | 22% | 1'015 | -17% | 838 | -9% | 763 | 42% | 1'080 | 119% |

6. Übersicht Umsätze und Jahresergebnisse 2002–2010

| Umsatz und Jahresergebnis (in Mio. CHF) | | 2002 | Δ 2002-2003 | 2003 | Δ 2003-2004 | 2004 | Δ 2004-2005 | 2005 | Δ 2005-2006 | 2006 | Δ 2006-2007 | 2007 | Δ 2007-2008 | 2008 | Δ 2008-2009 | 2009 | Δ 2009-2010 | 2010 | Δ 2002-2010 |
|-----------------------------------------|----------|--------|-------------|--------|-------------|--------|-------------|--------|-------------|--------|-------------|--------|-------------|---------|-------------|--------|-------------|--------|-------------|
| Swisscom | Umsatz | 10'415 | -4% | 10'026 | 0% | 10'057 | -3% | 9'732 | -1% | 9'652 | 15% | 11'089 | 10% | 12'198 | -2% | 12'001 | 0% | 11'988 | 15% |
| | Ergebnis | 824 | 90% | 1'569 | 2% | 1'594 | 47% | 2'346 | -19% | 1'904 | 9% | 2'071 | -15% | 1'751 | 10% | 1'925 | -7% | 1'786 | 117% |
| Swiss Life | Umsatz | 20'624 | 2% | 21'088 | 6% | 22'342 | -4% | 21'542 | -15% | 18'219 | 4% | 18'971 | -19% | 15'356 | 16% | 17'816 | 0% | 17'844 | -13% |
| | Ergebnis | -1'694 | 114% | 233 | 160% | 606 | 44% | 874 | 9% | 954 | 43% | 1'368 | -75% | 345 | -20% | 277 | 102% | 560 | 133% |
| UBS | Umsatz | 34'121 | -1% | 33'790 | 6% | 35'971 | 13% | 40'691 | 17% | 47'736 | -26% | 35'463 | -19% | 28'555 | -12% | 25'162 | 27% | 31'994 | -6% |
| | Ergebnis | 3'535 | 76% | 6'239 | 28% | 8'016 | 75% | 14'029 | -13% | 12'257 | -143% | -5'247 | -306% | -21'292 | 87% | -2'736 | 375% | 7'534 | 113% |
| Valora | Umsatz | 3'077 | 2% | 3'128 | -9% | 2'859 | 0% | 2'846 | -3% | 2'749 | 3% | 2'822 | 4% | 2'931 | -1% | 2'897 | -1% | 2'878 | -6% |
| | Ergebnis | 96 | -211% | -106 | 245% | 154 | -97% | 5 | 1064% | 55 | -16% | 46 | -46% | 25 | 115% | 53 | 16% | 62 | -36% |
| Zurich | Umsatz | 62'694 | 23% | 76'962 | -1% | 76'022 | 10% | 83'700 | -3% | 81'448 | -19% | 66'287 | -47% | 35'034 | 118% | 76'259 | -4% | 73'035 | 16% |
| | Ergebnis | -5'230 | 152% | 2'703 | 13% | 3'063 | 31% | 4'004 | 45% | 5'789 | 18% | 6'851 | -52% | 3'291 | 31% | 4'301 | -17% | 3'577 | 168% |

Banken: Credit Suisse, UBS.

Chemie- und Pharmabranche: Clariant, Lonza, Novartis, Roche.

Maschinenindustrie: ABB, Ascom, Bobst, Georg Fischer, Oerlikon, Schindler.

Versicherungen: Baloise, Helvetia, Swiss Life, Zurich.

Detailhandelsunternehmen: Coop, Migros, Valora.

Ehemalige Staatsbetriebe: Post, Ruag, Swisscom.

Nahrungsmittelindustrie: Lindt & Sprüngli, Nestlé.

Restliche Unternehmen: Implenla, Kuoni, Swatch.